

Côte d'Ivoire

Total population: 20,316,000

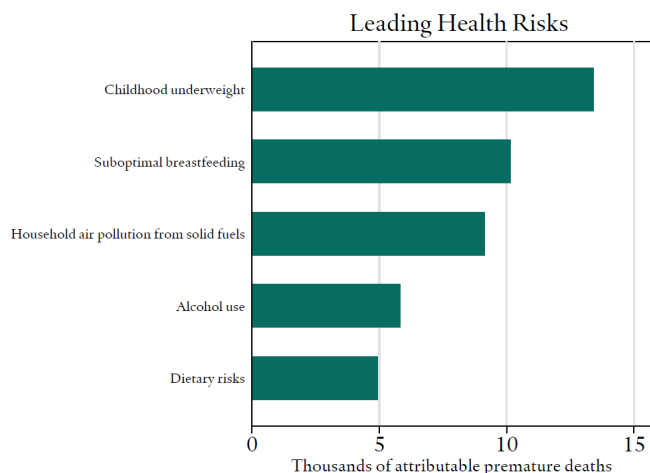
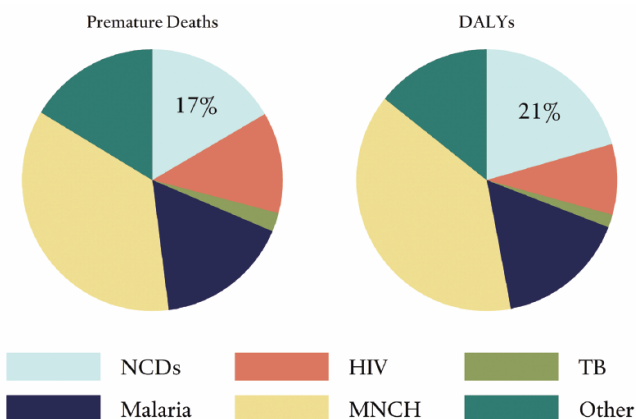
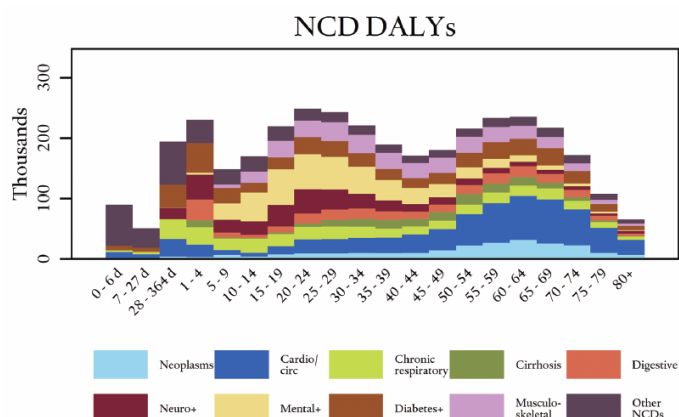
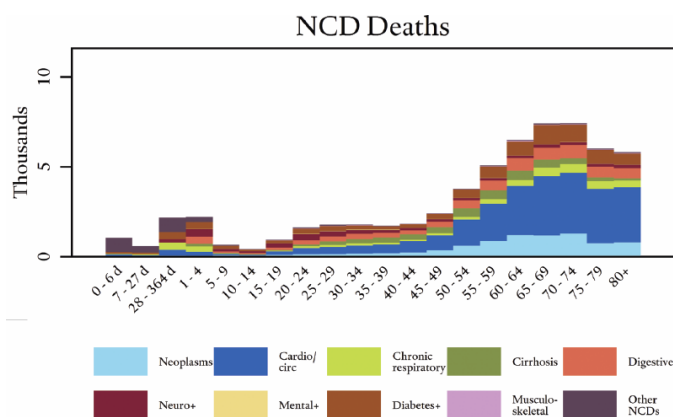
Income group: Lower-middle

U.S. global health aid FY 2013: \$134,769,000

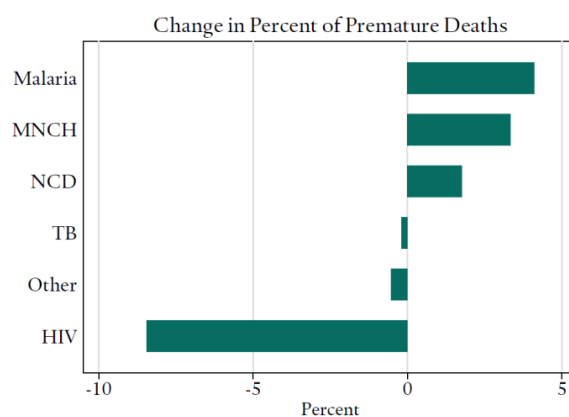
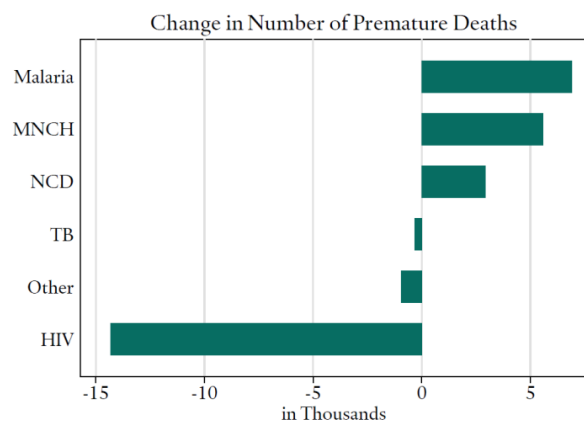
Percentage of population living in urban areas: 52.7%

Population proportion between ages 15 and 59: 53.6%

U.S. aid for NCDs from 2000 to 2011: \$0



Changes from 2000 to 2010



Data Source: Institute for Health Metrics and Evaluation