

Kenya

Total population: 44,354,000

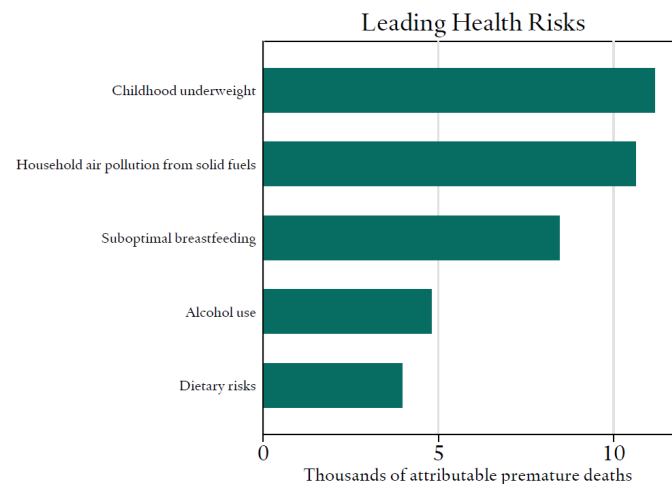
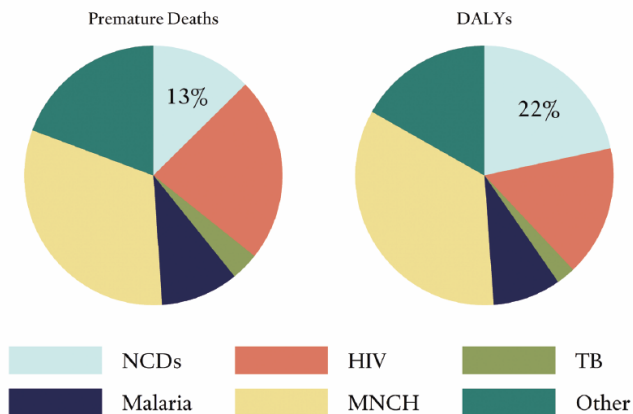
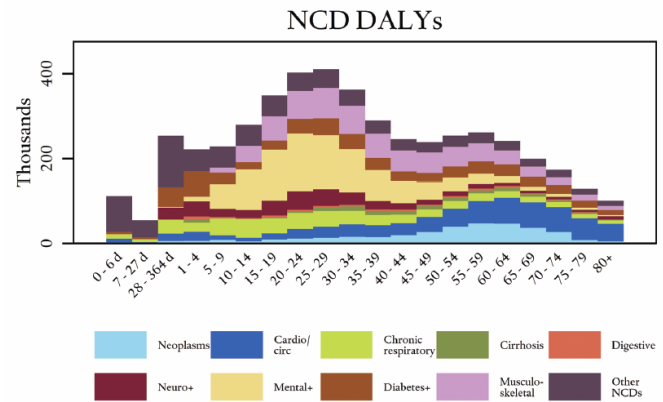
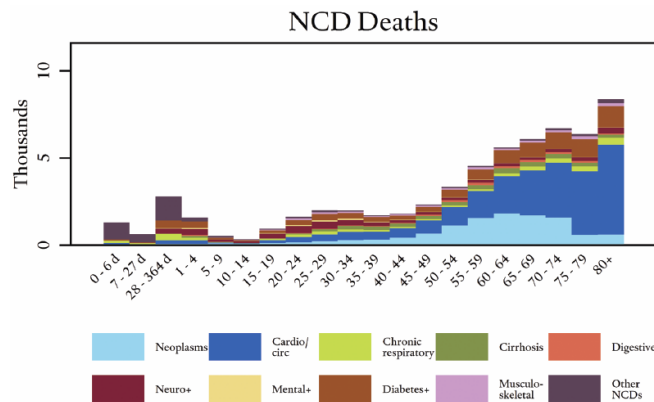
Income group: Low

U.S. global health aid FY 2013: \$356,031,000*

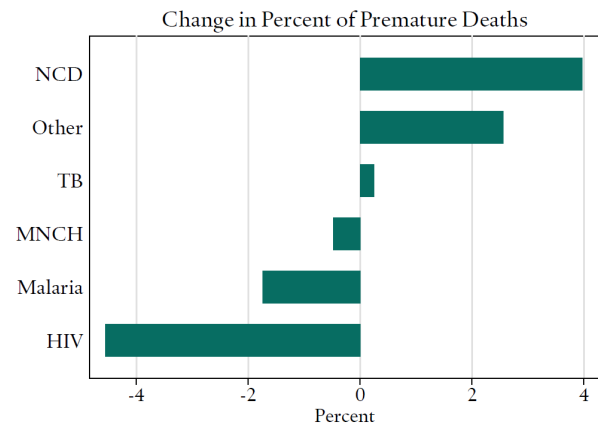
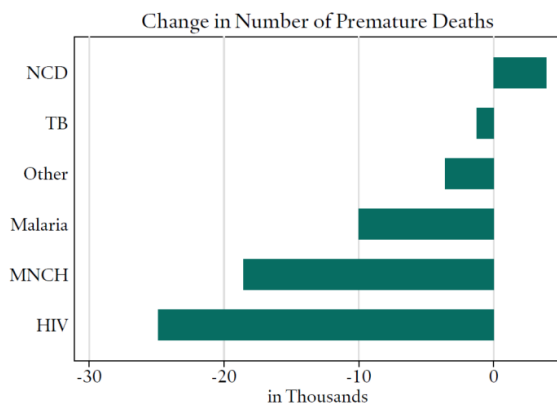
Percentage of population living in urban areas: 24.8%

Population proportion between ages 15 and 59: 53.5%

U.S. aid for NCDs from 2000 to 2011: \$0



Changes from 2000 to 2010



*Designated as a U.S. Global Health Initiative (GHI) priority country

Data Source: Institute for Health Metrics and Evaluation