

# Lesotho

Total population: 2,074,000

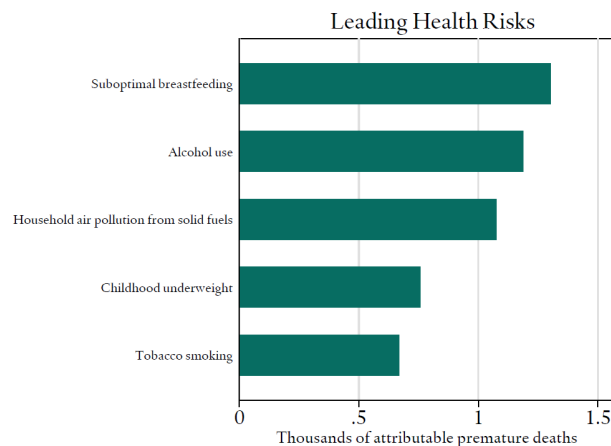
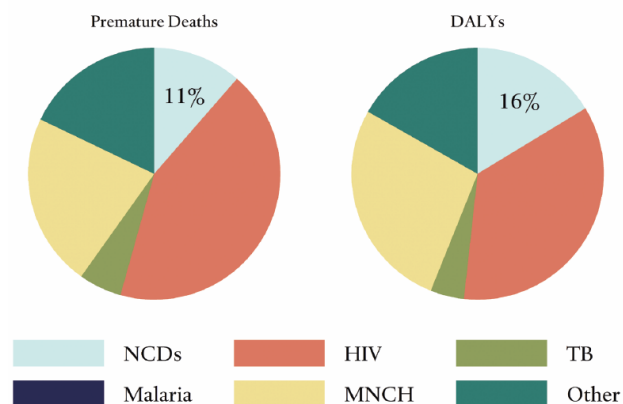
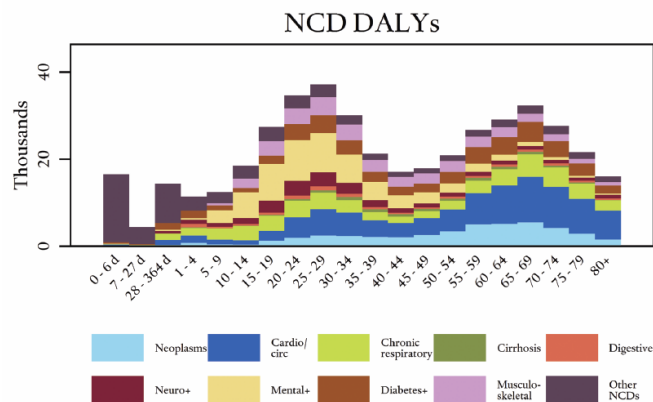
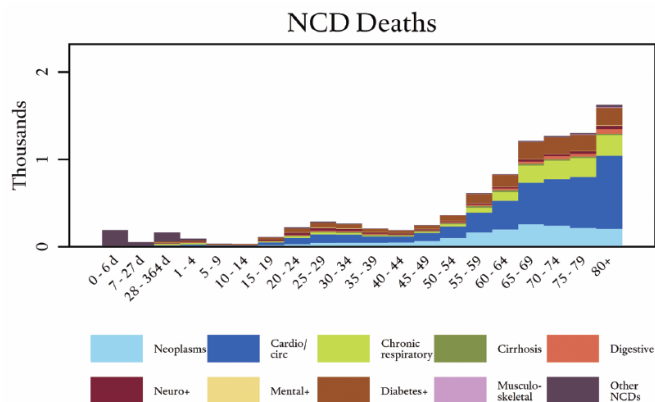
Income group: Lower-middle

U.S. global health aid FY 2013: \$33,165,000\*

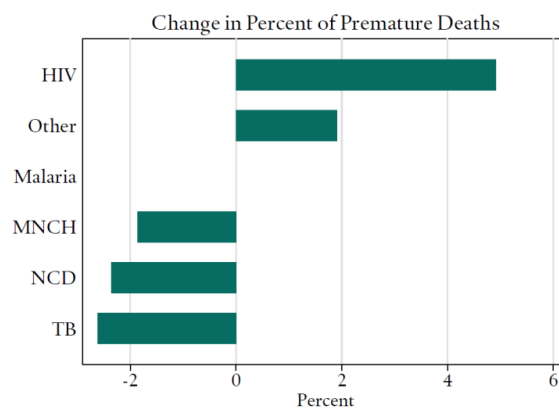
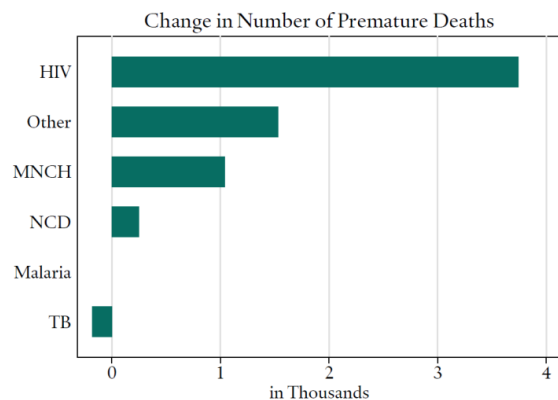
Percentage of population living in urban areas: 29.0%

Population proportion between ages 15 and 59: 57.3%

U.S. aid for NCDs from 2000 to 2011: \$0



## Changes from 2000 to 2010



\*Designated as a U.S. Global Health Initiative (GHI) priority country

Data Source: Institute for Health Metrics and Evaluation