

# Madagascar

Total population: 22,925,000

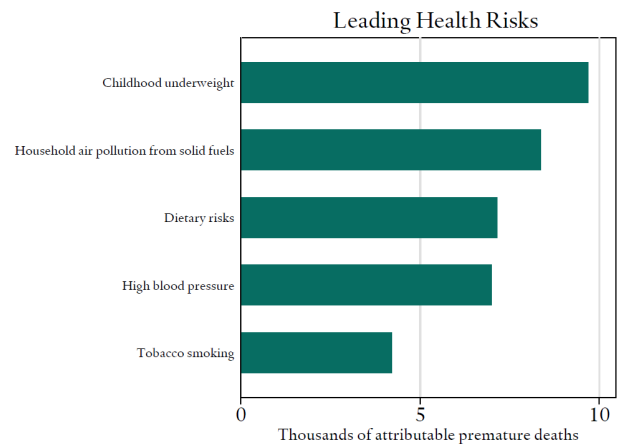
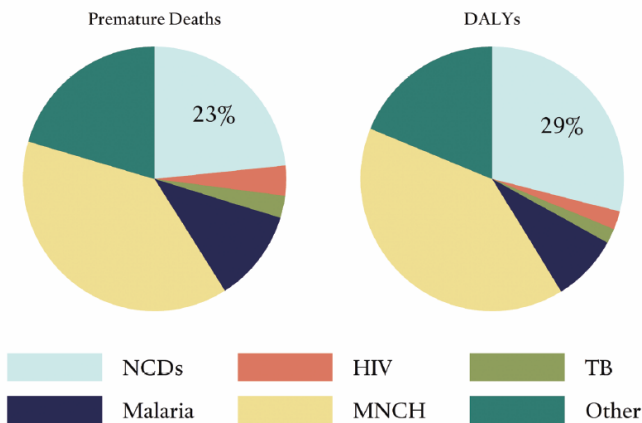
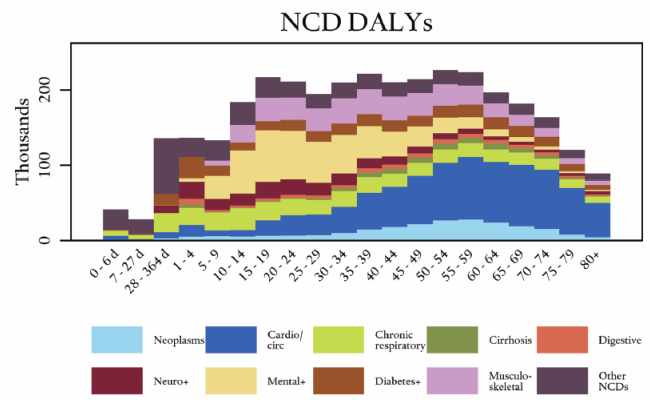
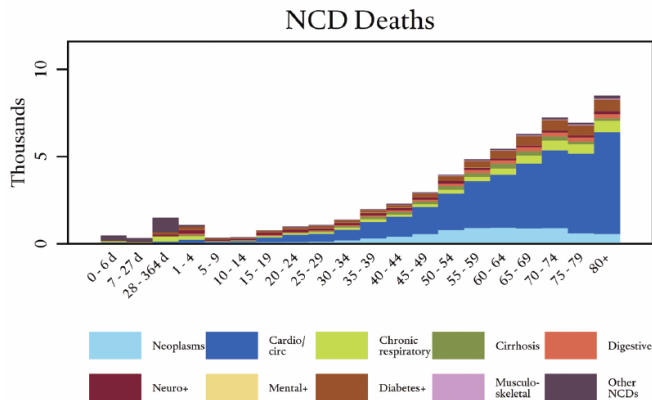
Income group: Low

U.S. global health aid FY 2013: \$48,640,000

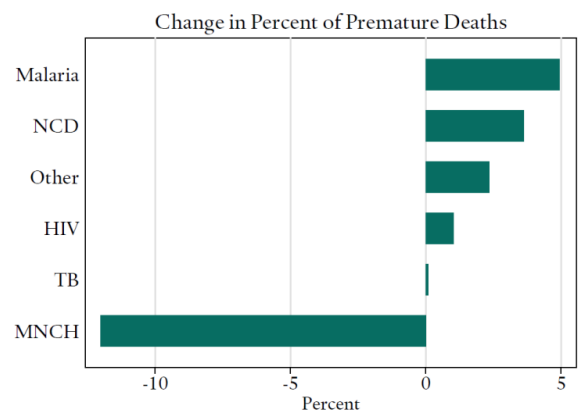
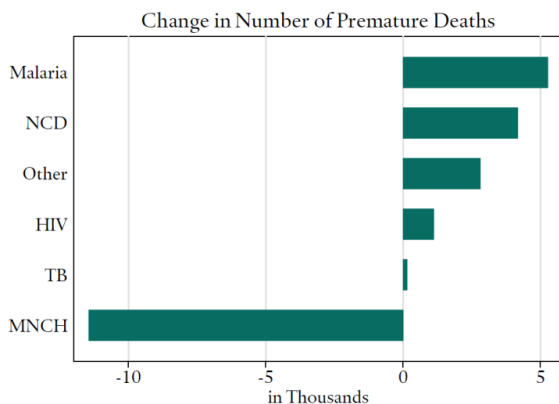
Percentage of population living in urban areas: 33.8%

Population proportion between ages 15 and 59: 53.1%

U.S. aid for NCDs from 2000 to 2011: \$51,768



## Changes from 2000 to 2010



Data Source: Institute for Health Metrics and Evaluation